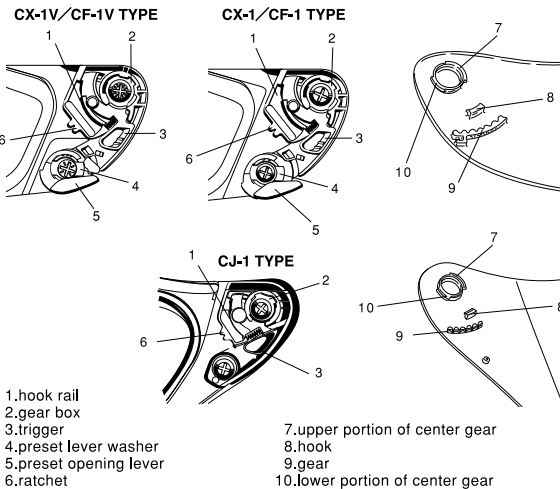
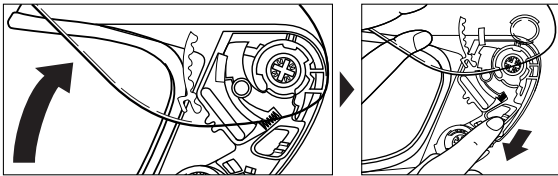


Built-in Mechanical Shield/Visor and QR Shield Base

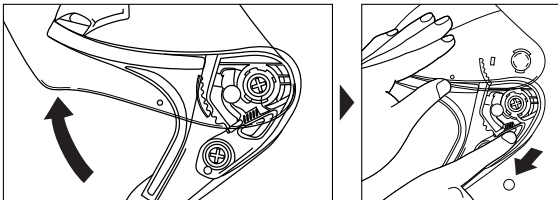


How to Remove and Fix Shield/Visor

CX-1V/CF-1V/CX-1/CF-1



CJ-1



Removing a Shield/Visor

Open a shield/visor fully. Release a lock drawing a trigger downward. Remove a hook from a hook rail, and then, remove a center gear of a shield/visor from gear box.

Fixing a Shield/Visor

Do in a reverse order.

Place a shield/visor in a full open position. Insert an upper portion of center gear into a gear box until a lower portion is locked. Make sure that a hooks is fixed to a hook rail firmly.

*Remove or fix the reverse side in the same manner.

*When fixing a new shield/visor, make fin adjustment of shield base if necessary referring to "Adjustment of Shield/Visor".

Adjustment of Shield/Visor (CX-1, CX-1V, CF-1 and CF-1V)

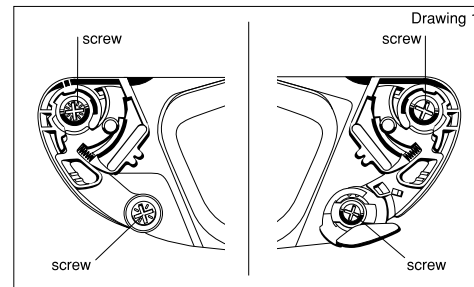
Adjust a shield base in a following manner in case a shield/visor is not in close touch with a window beading or does not close properly after replacement of a shield/visor or a shield base.

Check Point A: Whether an inside of a top end of a shield/visor is in close touch with a window beading;

Check Point B: whether a bottom end of a shield/visor is in close touch with a lip of a window beading;

In case there is a gap in a lower end of a shield/visor,

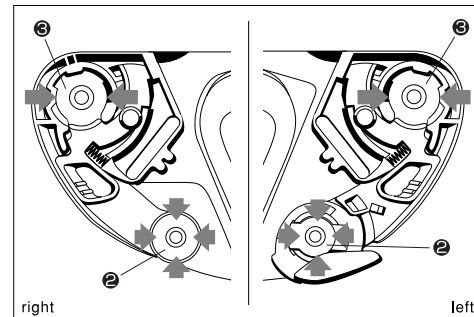
1 Remove a shield/visor from a helmet. Then, remove 4 (2 in each side) screws.



2 Tighten a screw aligning a hole of a lower portion of a shield base to a center of a hole for screw.

3 Then, tighten a screw aligning a hole of an upper portion of a shield base to a center of a hole for screw.

4 Do in a same manner for a shield base in the reverse side.



Check Point A

Adjust until this portion touches an upper window beading closely.



Check Point B

Adjust until this portion touches an lower window beading closely.



In case a gap still remains after above when a shield/visor is fixed,

5 Loosen a right upper screw only with a lower screw tightened. Then, rotate an upper portion a little, and tighten a screw. Make sure that a gap is eliminated after fixing a shield/visor.

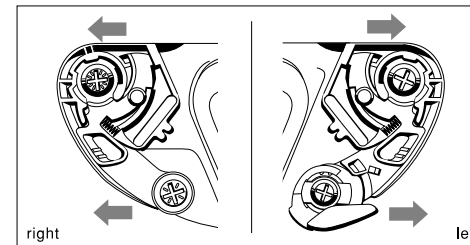
6 In case a gap still remains after above, repeat above 5. If an upper portion of a shield base is rotated excessively, a ratchet and a gear may not mesh each other.

7 If a gap is not eliminated even after above 6, move both upper and lower screws of the right side to their original positions and tighten them. Loosen both upper and lower screws of the left side. Move a shield base a little forward, and tighten the screws. Then, repeat above 5 for the right side shield base. *Do not rotate the right shield base. Move it in parallel.

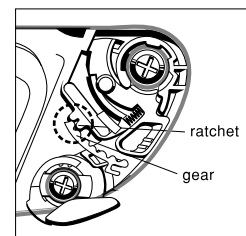
In case there are gaps in both top and bottom ends of a shield/visor,

8 Remove a shield/visor and loosen 4 (2 each side) screws(Drawing 1).

9 Shift both right and left sides shield bases rearward a little. Then, fix a shield/visor and check whether there are still gaps. If there still remains a gap in a lower end, repeat 5 to 7.



10 Make sure that ratchet and gear are meshed each other.



Warnings

In case new CF-1 or CF-1V does not close properly after replaced from CX-1 or CX-1V,

Different from CX-1 or CX-1V, CF-1 and CF-1V are in 2-D shape. Therefore, adjustment of a shield base is required very often when CX-1 or CX-1V is replace to CF-1 or CF-1V. in order to closed properly it is necessary to press a shield/visor strongly from an upper portion of a shield/visor.

Before Fixing Preset Opening Lever

Place a preset lever washer with a lower end to the front and a higher end to the rear before fixing a preset opening lever.

*Use genuine parts when replacing a shield/visor, shield base or preset lever.



Recommendations for Shield/Visor

- Do not use smoke or smoke mirror shield/visor in the nighttime except clear mirror.
- When your shield/visor gets dirty, use neutral detergent for washing and rinse well, and wipe with a soft cloth.
- Never use benzene, thinner, gasoline or glass cleaner when you wipe.
- Replace a shield/visor with scratches or dirt which cannot be eliminated. Otherwise, your vision is disturbed.
- Color of mirror coated shield/visor may change while used.

Attention

1. Make sure that screws of both shield bases are tightened and tighten them if they are loose.

2. Make sure that lower portions of center gear of both shield bases and hooks are locked and that shield is securely fixed.

***In case shield base or shield is not fixed properly, shield may suddenly come off or open while riding.**

3. In case shield base or screw is broken, be sure to replace it with genuine component.